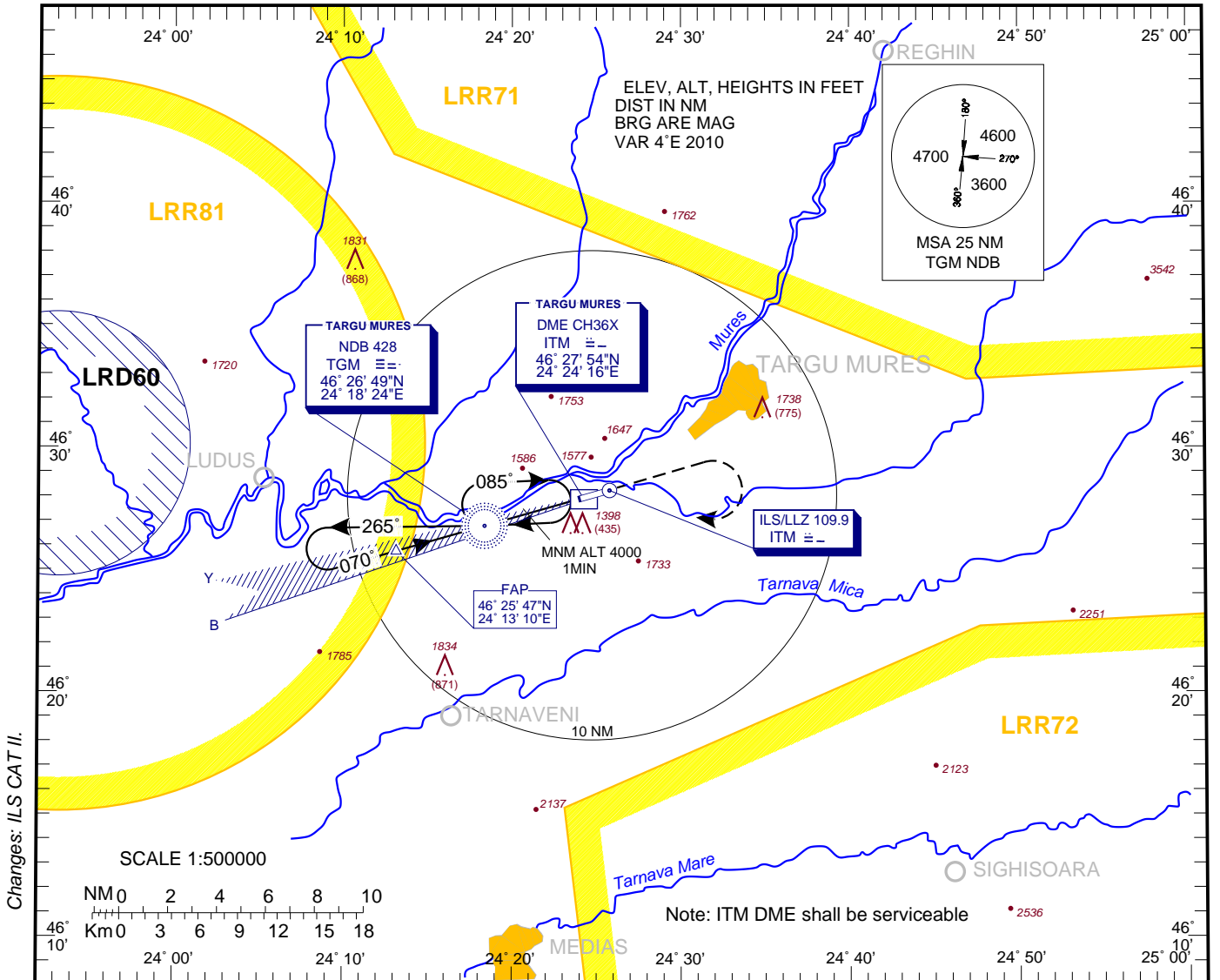


**INSTRUMENT APPROACH  
CHART - ICAO**

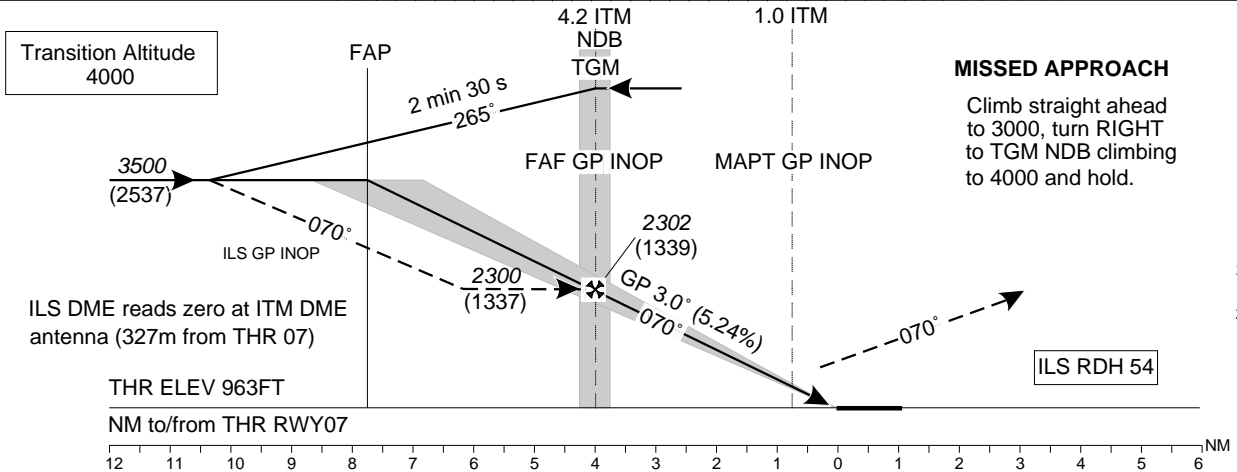
**TARGU MURES / Transilvania - Targu Mures (LRTM)**  
AERODROME ELEV. **963 ft**  
HEIGHTS RELATED TO AD ELEV

TARGU MURES TOWER 125.9

**ILS  
RWY 07  
CAT A / B**



Changes: ILS CAT II.



OCA(H)		A	B
Straight-in Approach	ILS CAT I	1111 (148)	1124 (161)
	ILS CAT II	1015 (52)	1029 (66)
	ILS GP INOP	1340 (377)	
Circling		1880	1950

GS	kts	70	90	100	120
FAF-MAPT 3.2 NM	min:s	2:45	2:08	1:55	1:36
Rate of descent	ft/min	372	478	531	637

Dist to TDZ	NM	4	3	2
Altitude (Height)	ft	2237 (1274)	1918 (955)	1600 (637)

For data tabulation see verso

**TÂRGU MUREŞ / TRANSILVANIA - TÂRGU MUREŞ (LRTM)  
ILS CAT A, B RWY 07**

**AERONAUTICAL DATA TABULATION**

<b>ILS Approach CAT A, B to RWY 07</b>	
<b>Fix/Point</b>	<b>Coordinates</b>
<b>TGM NDB (IAF / FAF GP INOP)</b>	46°26'48.9"N 024°18'23.7"E
<b>FAP – BRG 070.10 / 3.76NM TGM</b>	46°25'47.2"N 024°13'09.9"E
<b>1.0 D ITM (MAPT) - BRG 250.09 / 3.21NM TGM</b>	46°27'41.6"N 024°22'51.5"E
<b>THR 07</b>	46°27'55.01"N 024°24'00.25"E
<b>ITM LLZ</b>	46°28'15.1"N 024°25'43.3"E