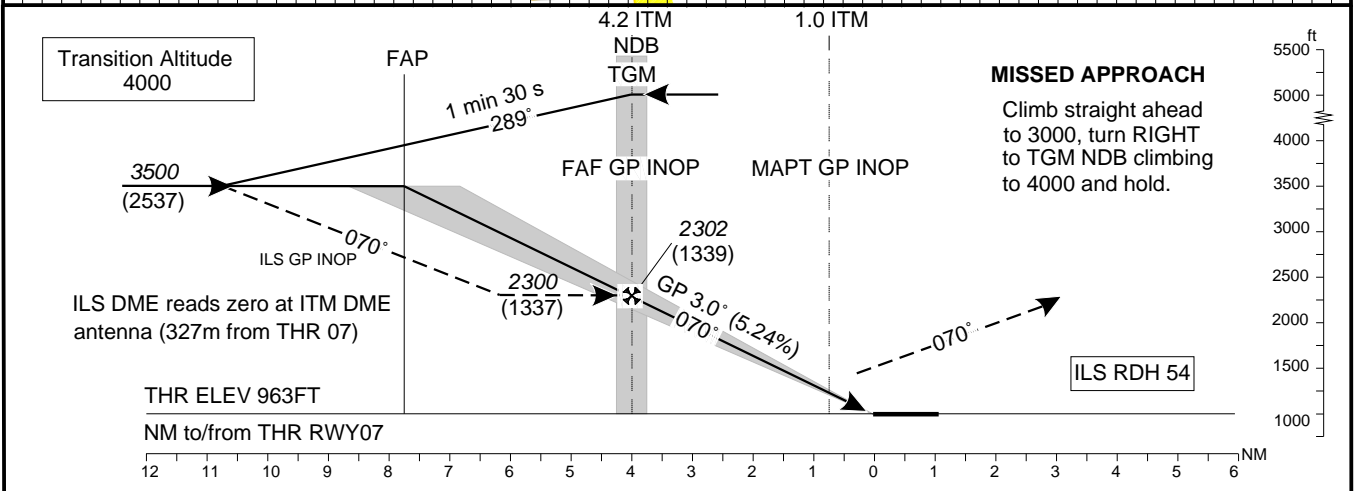
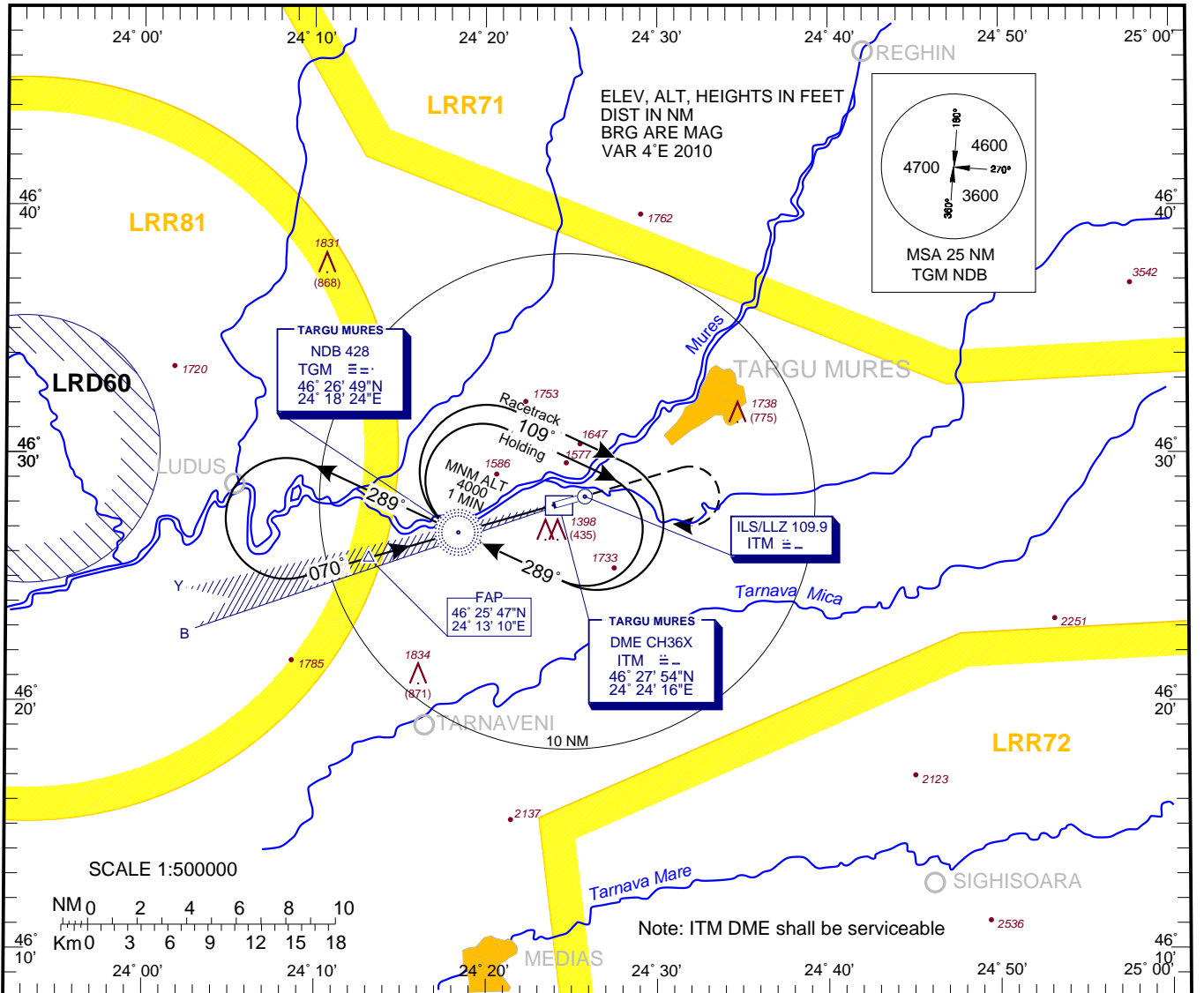


**INSTRUMENT APPROACH
CHART - ICAO**

AERODROME ELEV. 963 ft
HEIGHTS RELATED TO AD ELEV

TARGU MURES / Transilvania - Targu Mures
ILS
RWY 07
CAT C / D

TARGU MURES TOWER 125.9



OCA/(H)		C	D
Straight-in Approach	ILS CAT I	1137 (174)	1150 (187)
	ILS CAT II	1042 (79)	1061 (98)
	ILS GP INOP	1340 (377)	
Circling		2130	2150

GS	kts	120	140	160
FAF-MAPT 3.2 NM	min:s	1:36	1:22	1:12
Rate of descent	ft/min	637	743	849

Dist to TDZ	NM	4	3	2
Altitude (Height)	ft	2237 (1274)	1918 (955)	1600 (637)

For data tabulation see verso

**TÂRGU MUREŞ / TRANSILVANIA - TÂRGU MUREŞ (LRTM)
ILS CAT C, D RWY 07**

AERONAUTICAL DATA TABULATION

ILS Approach CAT C, D to RWY 07	
Fix/Point	Coordinates
TGM NDB (IAF / FAF GP INOP)	46°26'48.9"N 024°18'23.7"E
FAP – BRG 070.10 / 3.76NM TGM	46°25'47.2"N 024°13'09.9"E
1.0 D ITM (MAPT) - BRG 250.09 / 3.21NM TGM	46°27'41.6"N 024°22'51.5"E
THR 07	46°27'55.01"N 024°24'00.25"E
ITM LLZ	46°28'15.1"N 024°25'43.3"E